



Sailor

Sailor

**INSTRUKTIONSBOG FOR
SAILOR H1247**

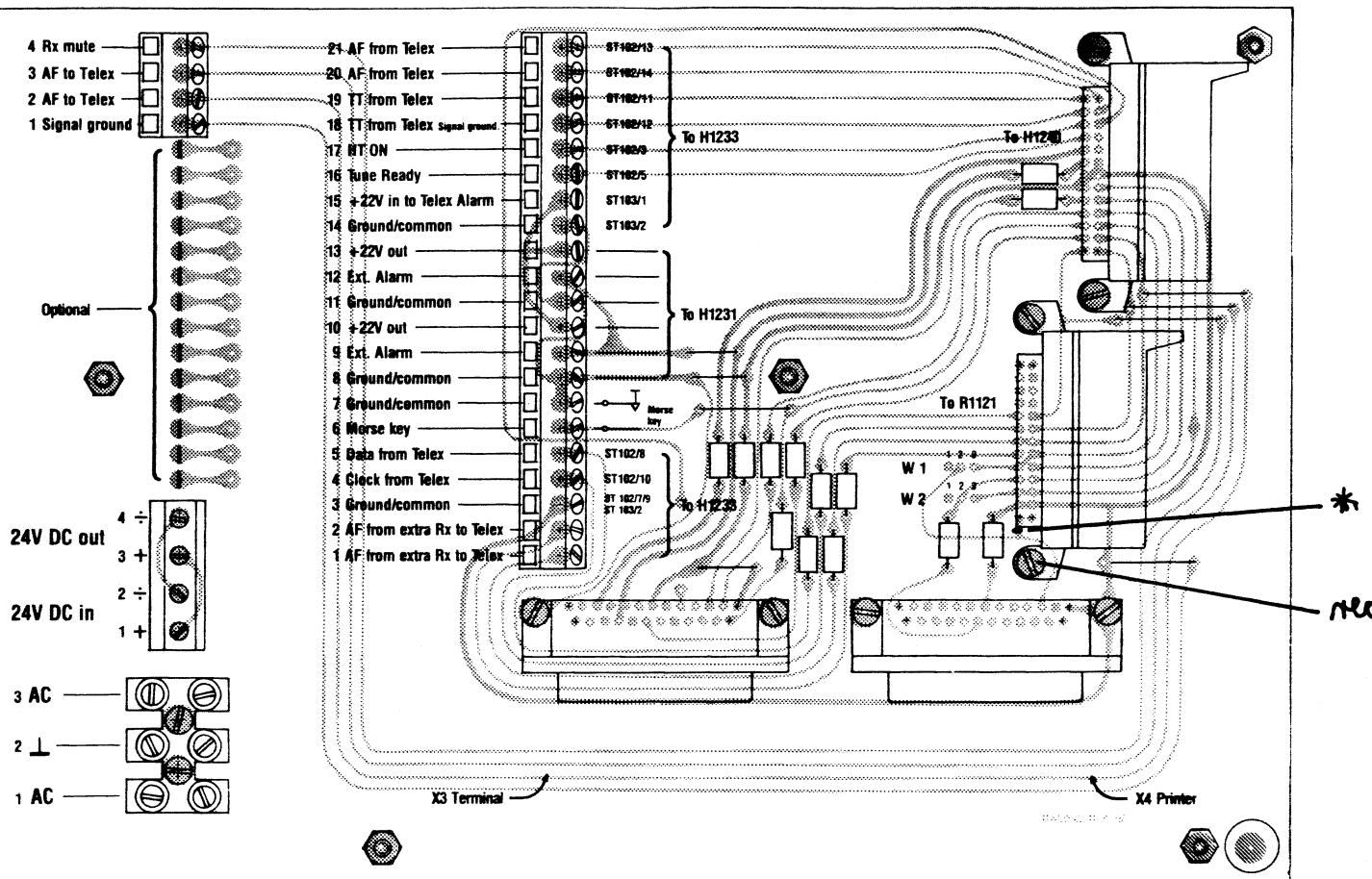
**INSTRUCTION BOOK FOR
SAILOR H1247**

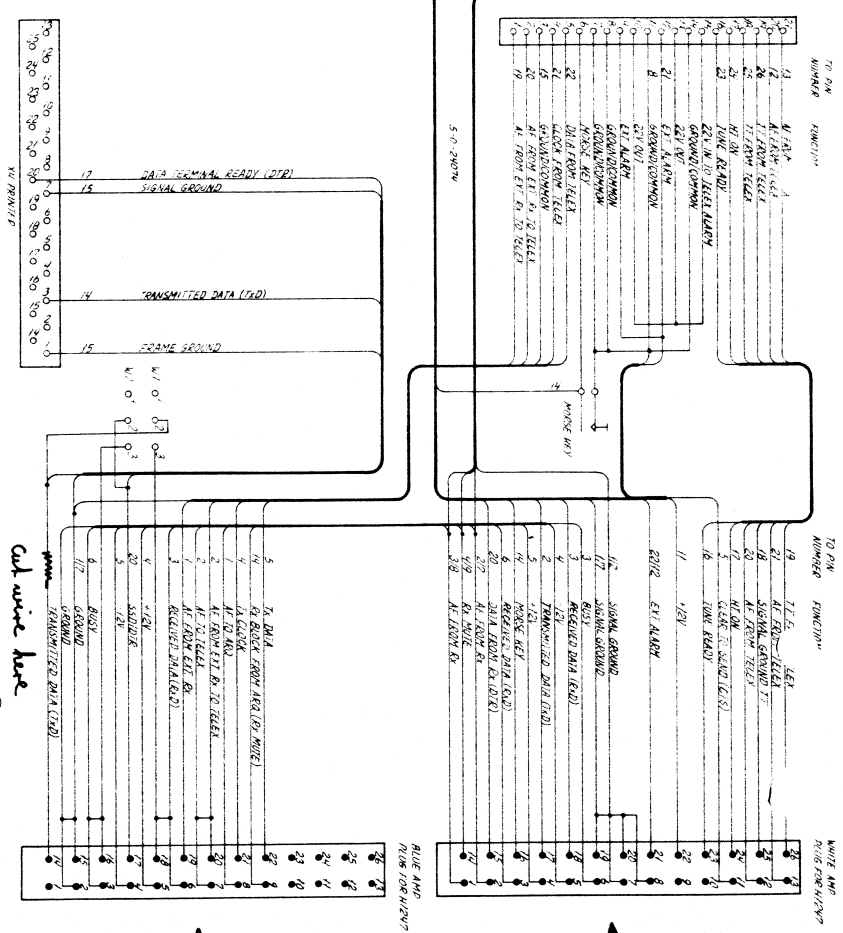


A/S S. P. RADIO · AALBORG · DENMARK

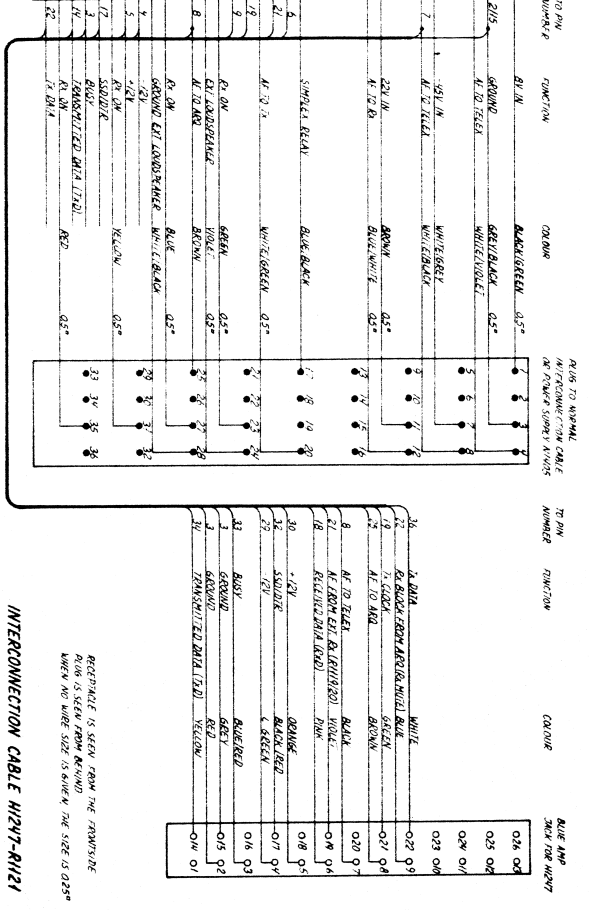
Because of the introduction of a new printer interface H1285 the following must be observed when installed together with R1121 Scanning receiver and H1247 Connection box. With T-Bus interface H1285 on printer the mounting has to be as follows: W1 is to be strapped 2-3, W2 is to be strapped 1-2. Conductor under plug (to R1121) is interrupted at mark * (pin 14), this could have happened at the factory, if so, the screw on plug (to R1121) is marked with red.

If a H1247 connection box with red mark is to be used on a printer with OKi interface the mounting without R1121 has to be as follows: W1 is to be strapped 2-3, W2 is to be strapped 2-3. Mounting with R1121: W1 is to be strapped 1-2, W2 is to be strapped 1-2, conductor is re-established at mark in both cases.

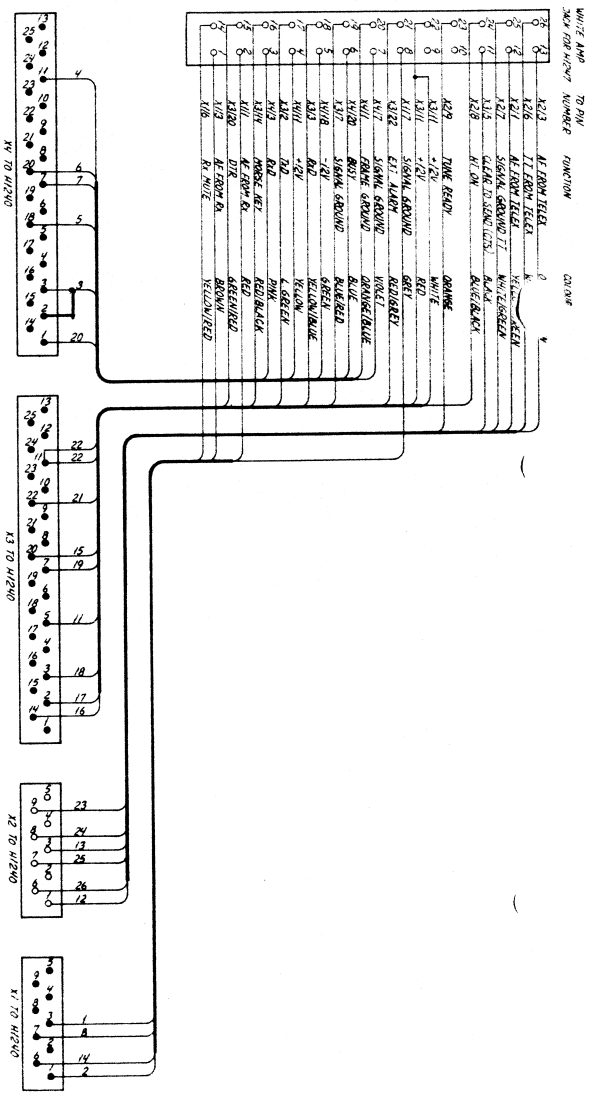




⑧ MAIN SCHEMATIC DIAGRAM FOR CONNECTION BOX HI2H7



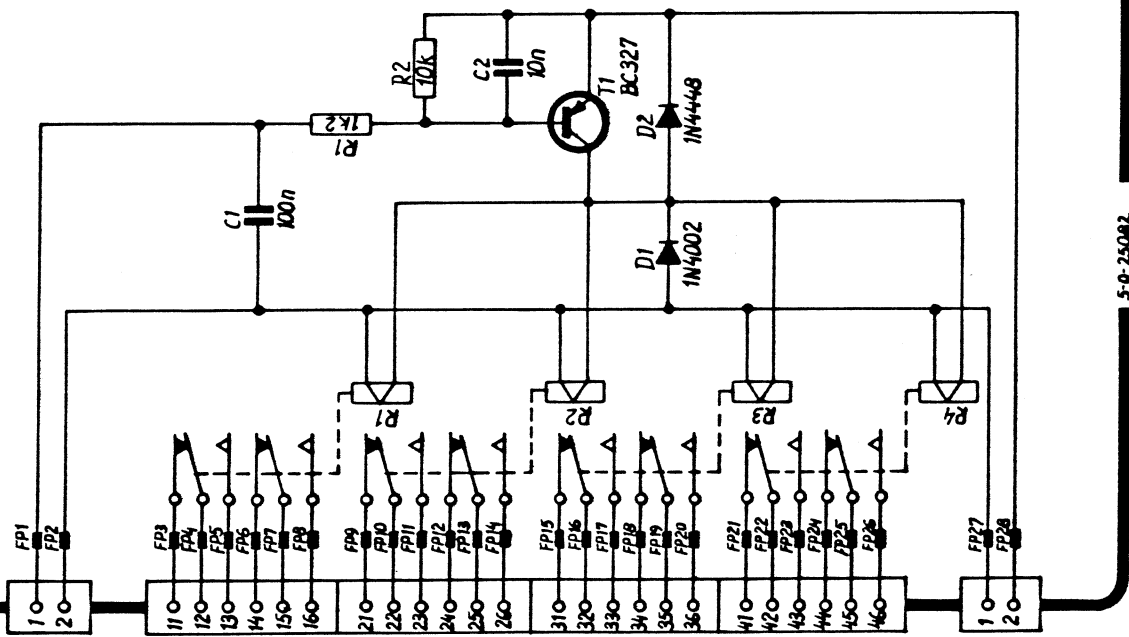
INTERCONNECTION CABLE HI2V7-HI2I1



① INTERCONNECTION CABLE HI2V7-HI2V0

A connection between pin 2 and 3 is to be made (only on equipment supplied before 15th March 1985). Check also that the microprocessor on interface pcb in RI121 Scanning receiver is the correct version (marked C1056B).

RELAY UNIT 1000B/TANDEM or 1000B/1000B



H1247 AUX
COMMON

AF from telex Tandem
H1247 AF from telex
H1233 AF from telex Auto telex
H1247 AF from telex Tandem
H1233 AF from telex
H1247 AF from telex Auto telex
H1233 AF from telex

TT Tandem rear contact
H1247 TT from telex
H1233 TT from telex

H1247 HT on
H1233 HT

H1247 Data from telex
H1233 Data from telex

Tune ready (Tx ready)
H1247 Tune ready
H1233 Tune ready

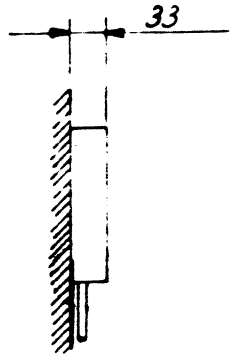
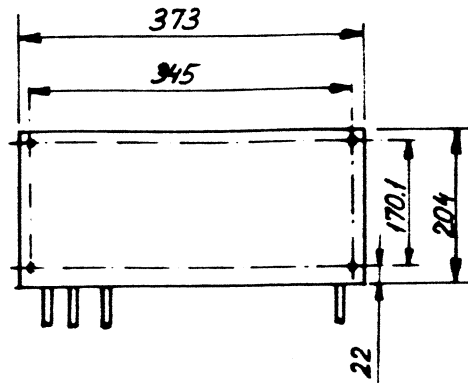
H1247 Clock from telex
H1233 Clock from telex

H1247 -22V
H1247 +22V

Relay Unit	S. P. RADIO AALBORG	Tegn. 10.3.86 NPP
	Diagram for Relay unit. Omiskifning 1000B/TANDEM	Cont. Malmstedt
		4-0-25082

5-0-25082

DIMENSIONAL DRAWING H1247 CONNECTION BOX



CONNECTION BOARD H1247

4 Rx mute
3 AF to Telex
2 AF to Telex
1 Signal ground

Optional

24V DC out

24V DC in

3 AC

2

1 AC

21 AF from Telex
20 AF from Telex
19 TT from Telex
18 TT from Telex
17 HT ON
16 Tube Ready
15 +22V in to Telex Alarm
14 Ground/common
13 +22V out
12 Ext. Alarm
11 Ground/common
10 +22V out
9 Ext. Alarm
8 Ground/common
7 Ground/common
6 Morse key
5 Data from Telex
4 Clock from Telex
3 Ground/common
2 AF from extra Rx to Telex
1 AF from extra Rx to Telex

ST102/13
ST102/14
ST102/11
ST102/12
ST102/3
ST102/5
ST103/1
ST103/2

To H1233

To H1240

To H1231

To R1121

ST102/8
ST102/10
ST102/7/9
ST103/2

To H1233

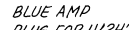
W 1

W 2

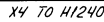
X3 Terminal

X4 Printer

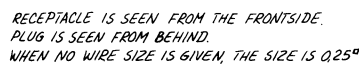
B



(B) MAIN SCHEMATIC DIAGRAM



(A) INTERCONNECTION CABLE H1247-H1240



INTERCONNECTION CABLE H1247-R1121

3.11